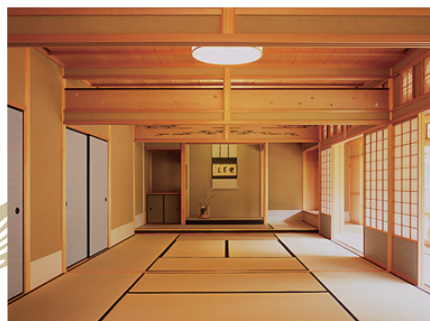
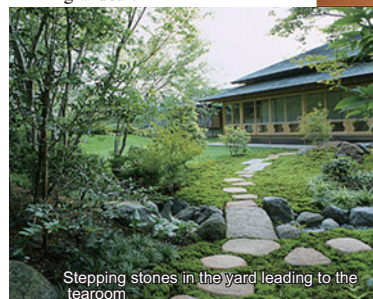


雲海 Unkai Tearoom

Unkai, the large tearoom, can be used as a multipurpose hall for tea ceremony, flower-arrangement exhibitions, haiku parties, and more. Built in the traditional Japanese style of construction, it represents grandeur.



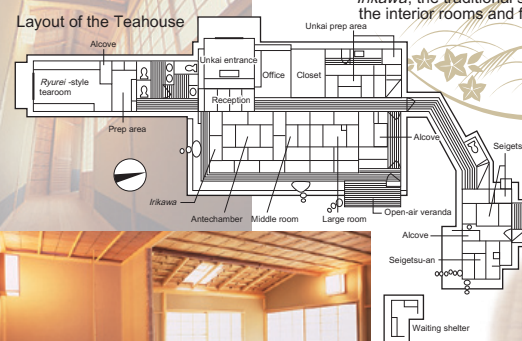
A spacious room with a *tokonoma* alcove at the back



Stepping stones in the yard leading to the tearoom.



Irikawa, the traditional space surrounding the interior rooms and facing the yard



静月庵 Seigetsu-an

Seigetsu-an is a small tearoom. Great care has been taken in the choice of materials, and rustic yet refined simplicity is highly valued.



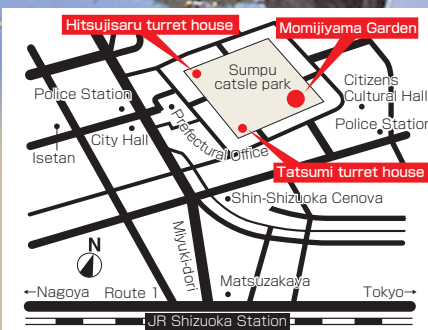
Looking outside from Seigetsu-an tearoom



Seigetsu-an viewed from the *roji* stepping stones

You may be asked not to enter when the tearooms are in use. The rooms can be rented for a fee. Contact the Tearoom Office at (054) 251-0016.

The Seasons of Shizuoka at Momijiyama Garden



Visitor Information

Hours: 9 a.m. to 4:30 p.m.
Closed on Mondays (If Monday is a national holiday, open on Monday and closed on Tuesday), and closed from December 29 through January 3.
Admission: 150 yen for adults (120 yen each for groups of more than 30)
50 yen for children (40 yen each for groups of more than 30)
Combined admission for the castle's East Gate and Tatsumi turret house:
300 yen for adults (240 yen each for groups of more than 30)
80 yen for children (60 yen each for groups of more than 30)

Access

5 minutes on foot from Shin-Shizuoka Station on the Shizutetsu Line
10 minutes on foot from JR Shizuoka Station
15 minutes by car from Shizuoka Interchange on the Tomei Expressway
Shizuoka is one hour by Shinkansen bullet train from Tokyo and two hours from Kyoto

Shizuoka City Hall
SHIZUOKA BUILHOZEN CO.,LTD

Takajo 2-23-9, Aoi-ku, Shizuoka City, Shizuoka, 420-0839, Japan
<http://www.city.shizuoka.jp> (in Japanese)



駿府城公園 紅葉山庭園 Momijiyama Japanese Garden in Sunpu castle park

The Elegance of Old Japan:
A Place of Beauty and Tradition

駿府城公園 紅葉山庭園

Sumpu castle Park is located in the center of Shizuoka City. In the past the park surrounded Sumpu Castle, built by Ieyasu, the first Tokugawa Shogun, back in 1585. Today the park is home to Momijiyama Garden, which is based on traditional gardens that have a pond as an important feature. This kind of garden was typically found at the manor houses of the *daimyo* (feudal lords) in the old days. Take a walk around and you'll be taken with the wonder of natural beauty.

Garden of the Village
As soon as you come through the entrance gate, you are greeted by flowers. A wooden pavilion provides a space to relax and welcomes you to the world of a Japanese traditional garden. Irises bloom in early summer around the staggered wooden bridge over the pond.

Garden of the Sea
Standing among the black pines facing the pond with the sandy white beach below evokes the seashore. Rocks in the pond and on the opposite shore characterize the well-known scenic beauty of the Izu area.

Garden of the Mountain Village
A miniature Mt. Fuji, which represents Shizuoka, sits in the center of the garden. Standing atop the hill provides a panoramic view of the garden. The lower part is designed with azaleas to represent terraced tea fields, also a symbol of Shizuoka.

Garden of the Mountain
Walking along the stream leads you to two different waterfalls—one vigorous, the other elegant. They symbolize the magnificence and beauty of the mountainous countryside. The Ivied Lane lies the other way around and leads toward the miniature Mt. Fuji.

